

## Answers: 8.1.4.4 Lab - Remote Desktop in Windows 8

### Introduction

In this lab, you will remotely connect to another Windows 8 computer.

### Recommended Equipment

The following equipment is required for this exercise:

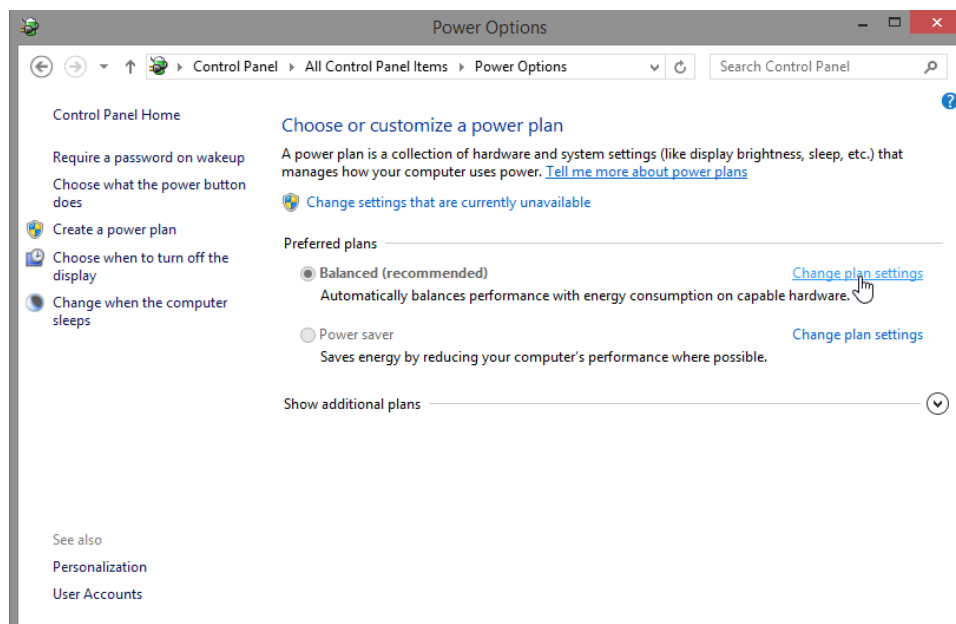
- Two Windows 8 PCs connected to a LAN.
- The two computers must be part of the same Workgroup and on the same subnet.

### Step 1: Change the Power Options on PC 2.

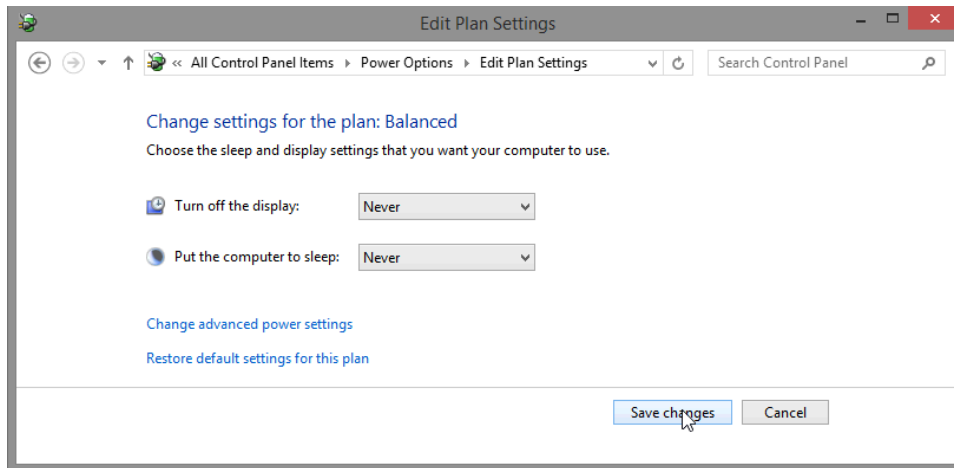
- Log on to PC 2 as a member of the administrator group. Ask your instructor for the user name and password.

**Note:** The user account must have a password to access PC 2 remotely.

- To open the Power Options window, click **Start > Control Panel > Power Options**.
- In the Preferred plans section of the **Power Options** window, click **Change plan settings** to the right of the **Balanced (recommended)** plan.



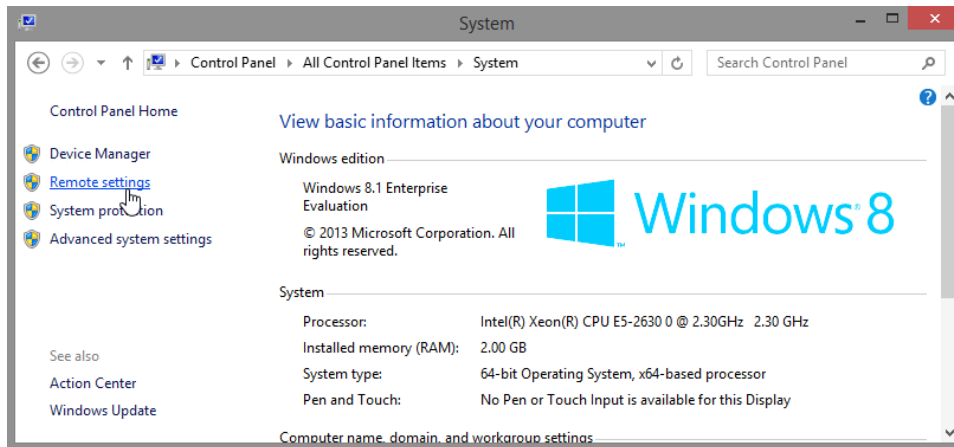
- d. The **Edit Plan Settings** window opens. Click **Change settings that are currently unavailable**. Select **Never** in the **Turn off the display:** and **Put the computer to sleep:** dropdown boxes. Click **Save changes**.



- e. Click **OK** to close the warning message, if it appears.
- f. Close all open windows.

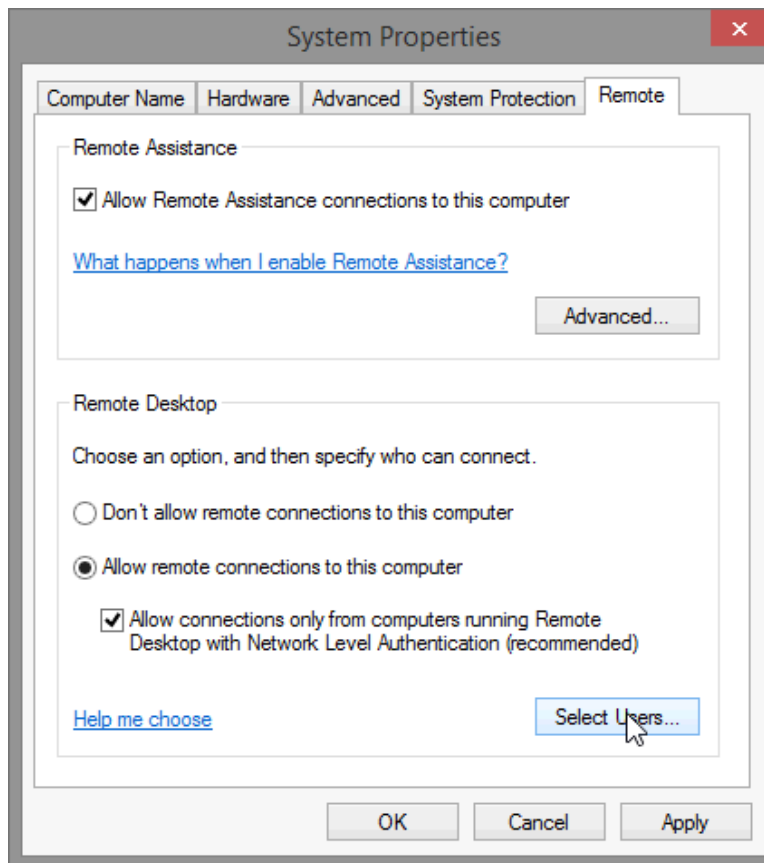
**Step 2: Enable Remote Desktop Connections on PC 2.**

- a. Click **Control Panel > System > Remote settings**.

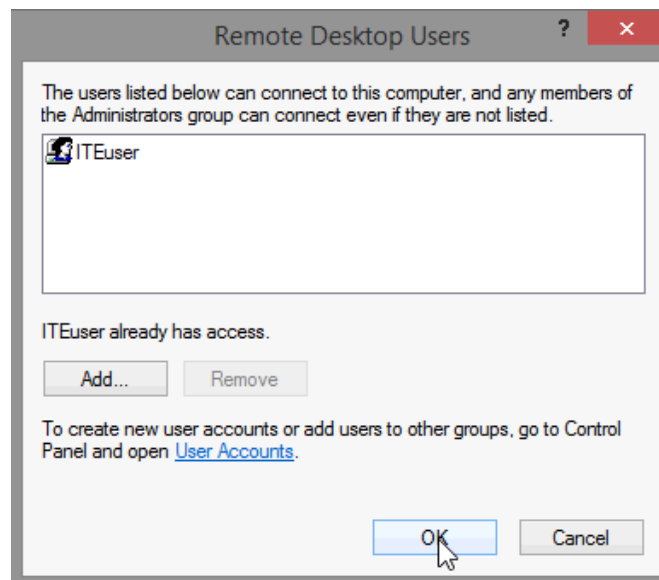


- b. In the Remote Desktop area of the **System Properties** window, select **Allow connections only from computers running Remote Desktop with Network Level Authentication (more secure)**.

- c. In the **System Properties** window, click **Select Users**.



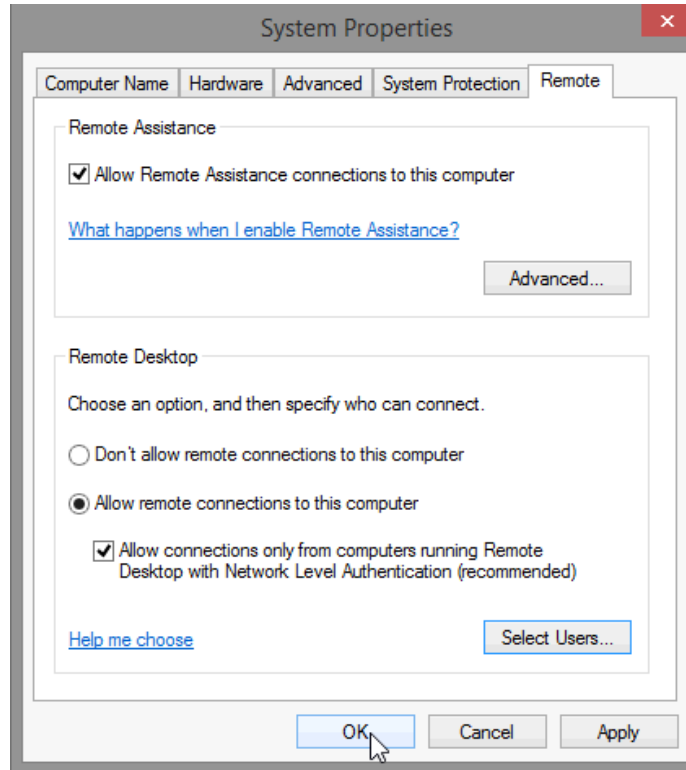
- d. The **Remote Desktop Users** window opens.



Which user already has remote access?

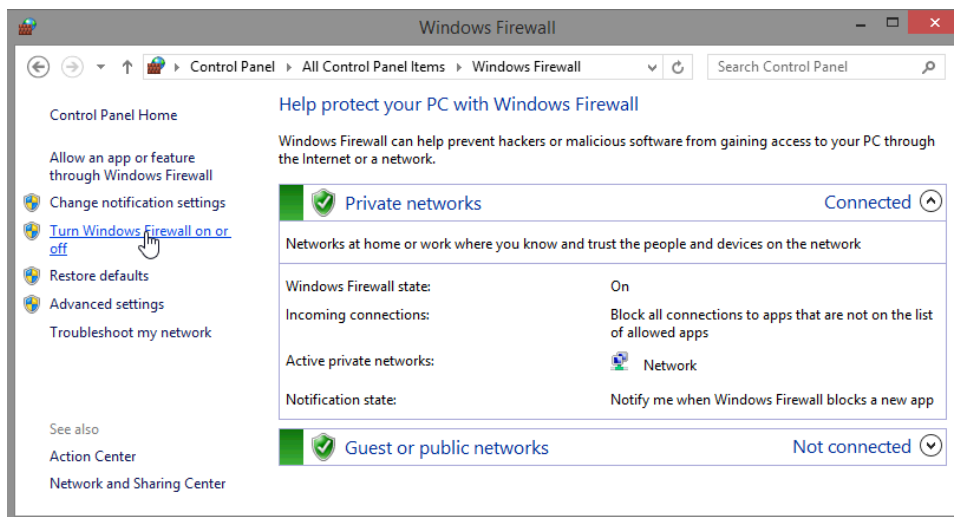
## Lab – Remote Desktop in Windows 8

- e. Because you will use this account to gain remote access, you do not need to add any users, click **Cancel**.
- f. Click **OK** to apply changes and close the System Properties window.

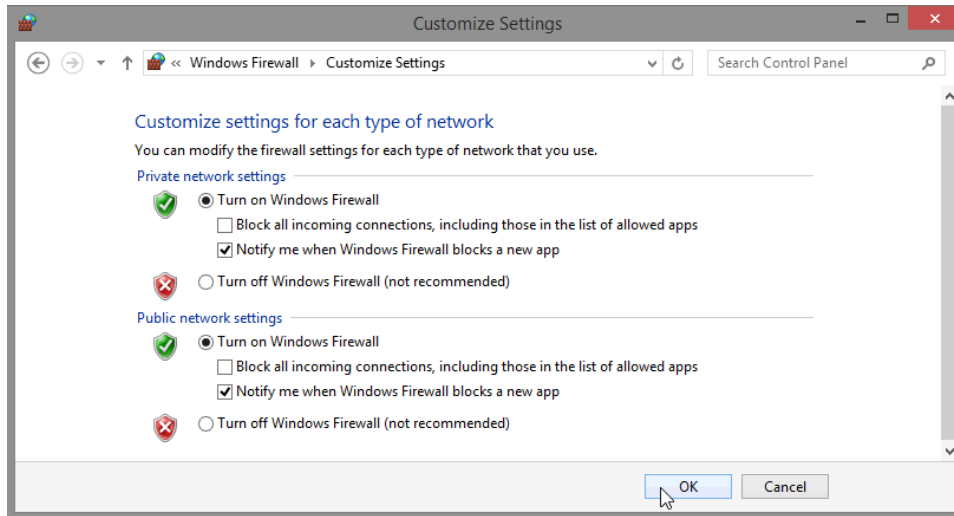


### Step 3: Check the firewall settings on PC 2.

- a. Click **Control Panel > Windows Firewall > Turn Windows Firewall on or off**.



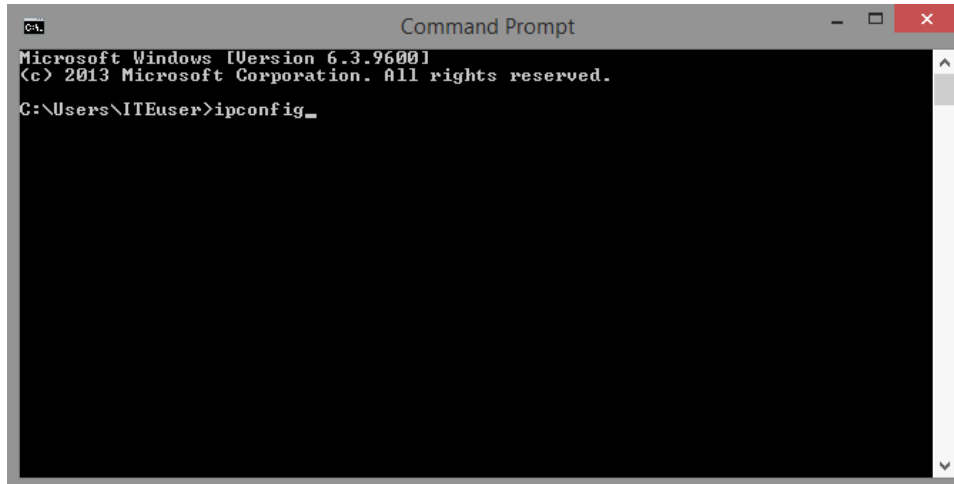
- b. Verify that the **Turn on Windows Firewall** radio button is selected for both private and public networks. If they are not, then select **Turn on Windows Firewall**, and then click **OK**.



- c. Close all open windows.

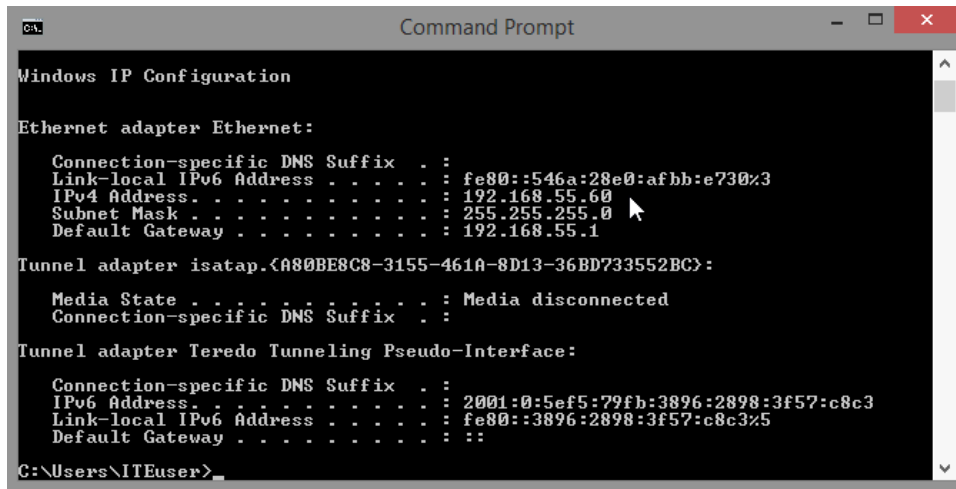
**Step 4: Determine PC 2's IPv4 Address.**

- a. Click **Start**, type **command prompt** and then press **Enter** to open the **Command Prompt** window.
- b. In the **Command Prompt** window, type **ipconfig** and then press **Enter**.



## Lab – Remote Desktop in Windows 8

- c. You will need PC 2's IPv4 Address to complete Step 5. The address can be located in the output generated from the **ipconfig** command. Under the **Ethernet adapter Local Area Connection** heading, and to the right of the **IPv4 Address** row.



```
Command Prompt

Windows IP Configuration

Ethernet adapter Ethernet:

    Connection-specific DNS Suffix  . : 
    Link-local IPv6 Address . . . . . : fe80::546a:28e0:afbb:e730%3
    IPv4 Address. . . . . : 192.168.55.60
    Subnet Mask . . . . . : 255.255.255.0
    Default Gateway . . . . . : 192.168.55.1

Tunnel adapter isatap.{A80BE8C8-3155-461A-8D13-36BD733552BC}:

    Media State . . . . . : Media disconnected
    Connection-specific DNS Suffix  . : 

Tunnel adapter Teredo Tunneling Pseudo-Interface:

    Connection-specific DNS Suffix  . : 
    IPv6 Address. . . . . : 2001:0:5ef5:79fb:3896:2898:3f57:c8c3
    Link-local IPv6 Address . . . . . : fe80::3896:2898:3f57:c8c3%5
    Default Gateway . . . . . : 

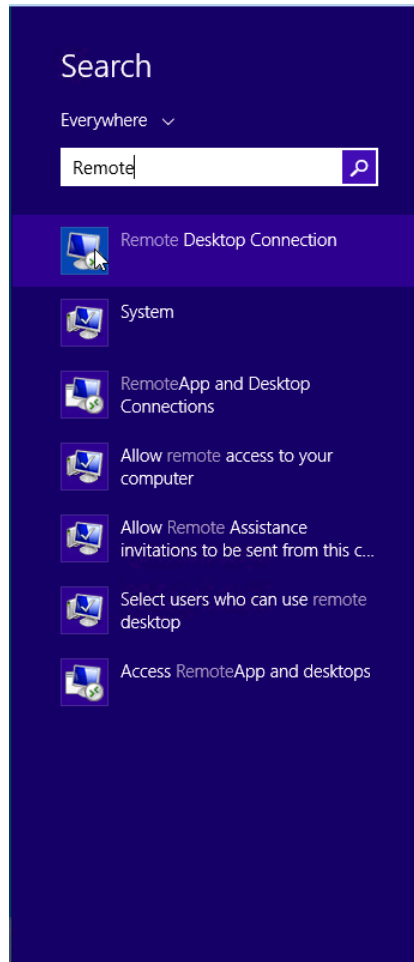
C:\Users\ITEuser>
```

What is PC 2's IPv4 Address?

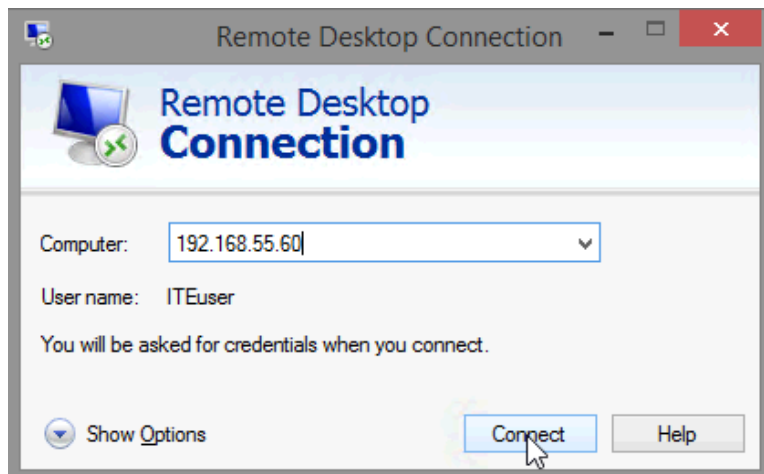
### Step 5: From PC 1, use the Remote Desktop Connection to remotely access PC 2.

- a. Log on to PC 1 as an administrator or a member of the administrator group. Ask your instructor for the user name and password.

- b. Click **Start**, type **Remote**, and then select **Remote Desktop Connection** from the list.

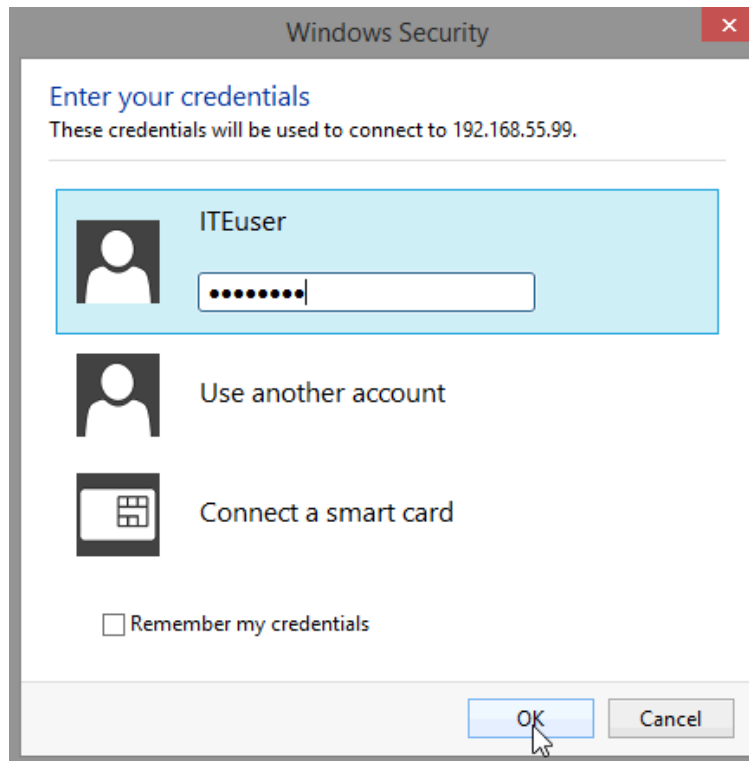


- c. The **Remote Desktop Connection** window opens. Type PC 2's IPv4 Address into the **Computer** field and then click **Connect**.



## Lab – Remote Desktop in Windows 8

- d. The **Windows Security** window opens. Enter the same user name and password that you used to login to PC 2 in Step 1. Click **OK**.



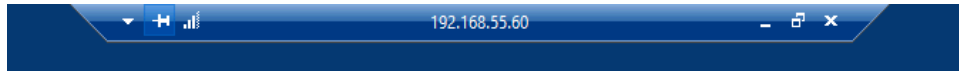
- e. Click **Yes** to allow the connection.





## Lab – Remote Desktop in Windows 8

- f. The desktop changes and a bar appears at the top of the screen with the IPv4 Address of PC 2.



What does this bar at the top of the desktop indicate?

### Step 6: Verify that you are remotely connected to PC 2.

- a. Navigate to the **Start** screen and then type **command prompt** to open a **Command Prompt** window.  
b. Type **ipconfig** at the command prompt and press **Enter** to view the PC's IP Address.

```
Windows IP Configuration

Ethernet adapter Ethernet:

    Connection-specific DNS Suffix  . : 
    Link-local IPv6 Address . . . . . : fe80::546a:28e0:afbb:e730%3
    IPv4 Address. . . . . : 192.168.55.60
    Subnet Mask . . . . . : 255.255.255.0
    Default Gateway . . . . . : 192.168.55.1

Tunnel adapter isatap.{A80BE8C8-3155-461A-8D13-36BD733552BC}:

    Media State . . . . . : Media disconnected
    Connection-specific DNS Suffix  . : 

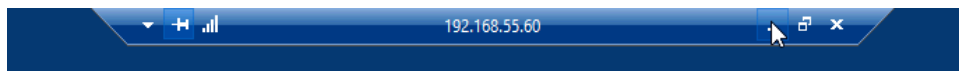
Tunnel adapter Teredo Tunneling Pseudo-Interface:

    Connection-specific DNS Suffix  . : 
    IPv6 Address. . . . . : 2001:0:5ef5:79fb:3896:2898:3f57:c8c3
    Link-local IPv6 Address . . . . . : fe80::3896:2898:3f57:c8c3%5
    Default Gateway . . . . . : ::

C:\Users\ITEuser>
```

Compare the IP Address that is displayed to PC 2's IP Address that you wrote down at the end of Step 4. Are the IP Addresses the same?

- c. Click the **Minimize** button on the **Remote Desktop Connection** bar at the top of the screen.

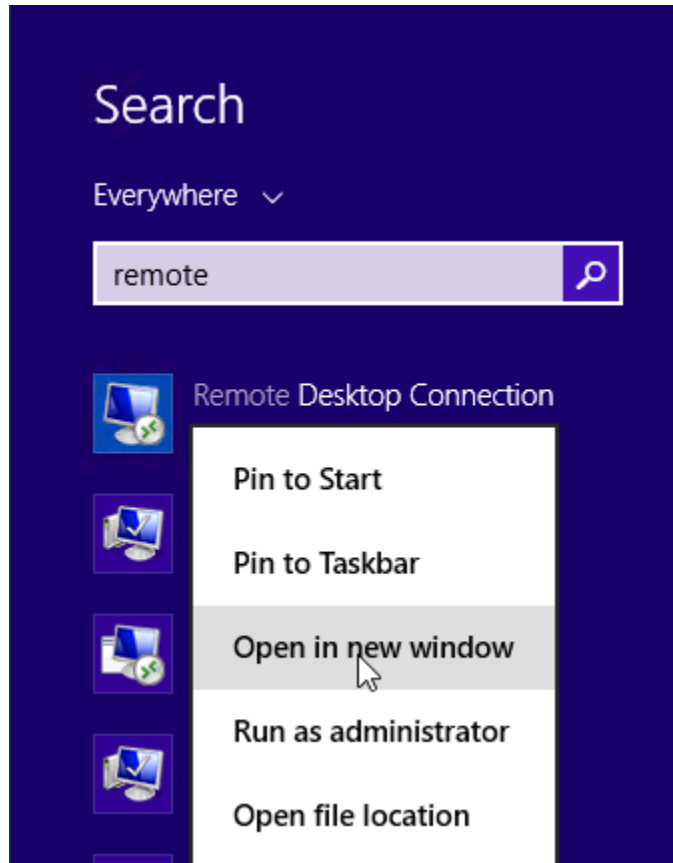


What happens to the desktop?

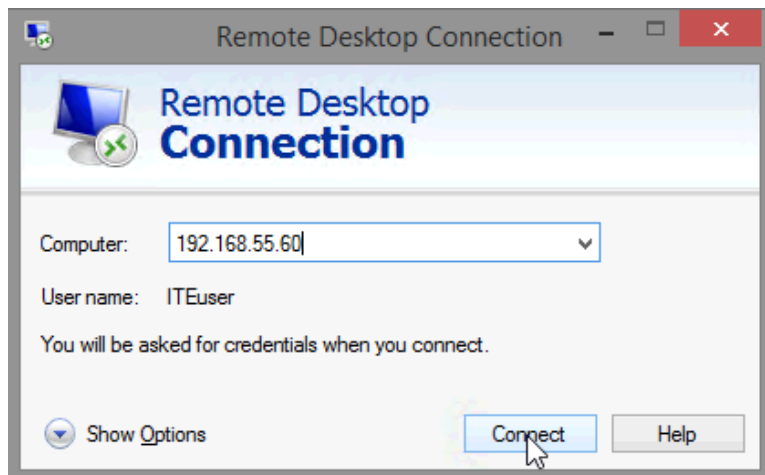
### Step 7: Try to establish a second Remote Desktop Connection to PC 2.

When you connect to a remote PC using RDC and login to that PC with a local username and password, everything works as though you are logging into the PC locally. However, only one user can be logged into Windows at a time. That is why logging into a remote Windows PC using RDC will actually log out another RDC or local user.

- a. Working from **PC 1**, with the first RDC session to PC 2 still minimized, click **Start**, type **remote**, and then right-click on **Remote Desktop Connection** and select **Open in new window**.



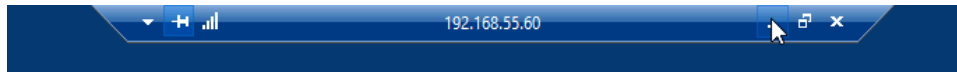
- b. Establish a second RDC session to PC 2 by typing PC 2's IPv4 Address into the Computer field again, and then clicking **Connect**.



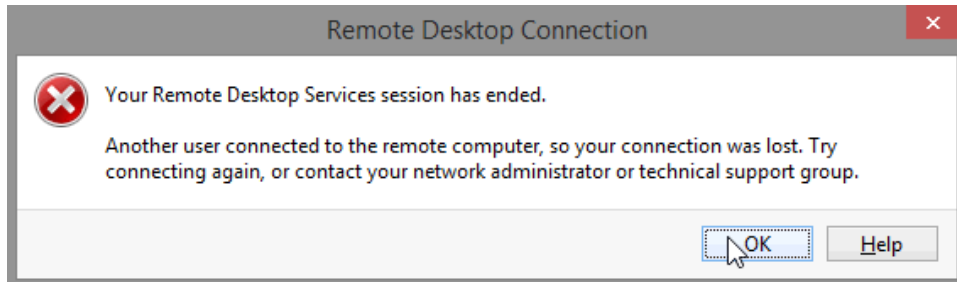
- c. When the Windows Security window opens, enter the user name and password for PC 2 and click **OK**.

## Lab – Remote Desktop in Windows 8

- d. Minimize the second session of RDC by clicking the **Minimize** button on the RDC bar at the top of the screen.

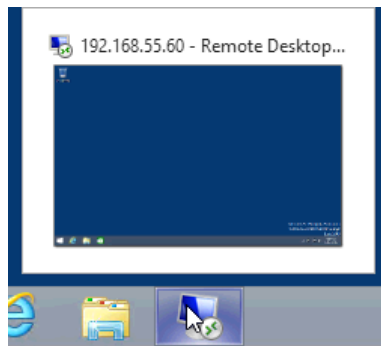


- e. Read the Remote Desktop Connection message that appears on PC 1's desktop, then click **OK**.



Which RDC session was ended? Why?

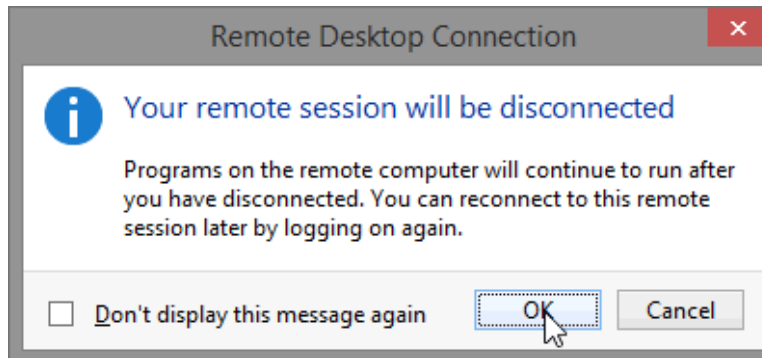
- f. Maximize your RDC session to PC 2. Click on the **RDC** icon in the taskbar of **PC 1**.



- g. You should see the RDC bar displaying PC 2's IPv4 Address at the top of the screen. Click on the **X** icon to close the RDC session to PC 2.



- h. The **Remote Desktop Connection** window opens. Read the message, and then click **OK**.



- i. Close all remaining open windows on PC 1.

### Reflection

1. What happens to a local user signed into PC 2 when a remote user logs into PC 2 using RDC?
2. Why would an IT administrator use RDC?